



Smart air for smarter living



*Bora-x
R32 Developer Series
Hi-wall Inverter
Heat Pumps*



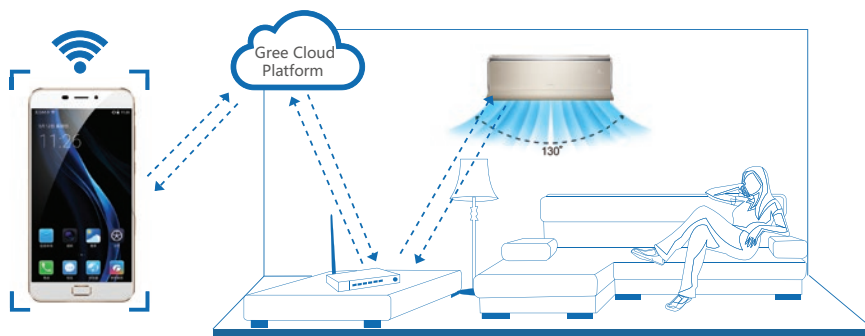
Find out more at www.greeac.co.nz



Quiet and Energy Efficient

Smart Generation Factory WiFi

Wi-Fi is built in on all models of the Bora range in both Apple and Android. After installing the “Gree+” app on your phone or tablet, you can remotely control the air conditioner from anywhere in the world.



"iFeel" Remote Control

All units come with the Gree YAG1FB4 remote controller. Along with user and timer functions the YAG1FB4 also features “iFeel” control for greater comfort



Wired Wall Controller XK76 (optional)

The Gree Bora range can be connected to a stylish wired wall controller. The wired wall controller offers 6 timer functions with a 14 day multi event timer, user function settings and a “child lock” capability.



"iChoose" LED Display

The Gree Bora range features the new “iChoose” LED displays. The display will show power, mode and set point. Using the remote you can see indoor and outdoor ambient temperatures and when it's time to sleep, the display can be switched off, leaving a pristine flat panel.





Smart Health

The Gree Bora range comes with High Density Filters. These filters have a higher than normal density to filter more dust and pollen from the air. Mini Photocatalytic filters are also standard.

The Gree Bora range has a coil drying function. When selected this automatically runs the indoor fan for a set period after switching the unit off. This dries the indoor coil to prevent the build-up of mildew.

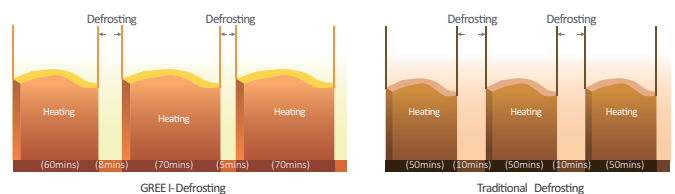
Reliably Smart

- Soft Start software limits the compressor start up current
- Low voltage start up, provides protection against brown outs and poor power supplies
- Low power usage in standby mode, 0.5 watts
- Wide temperature cooling operation from -10°C ~ 50°C
- Low temperature heating operation from -15°C ~ 24°C



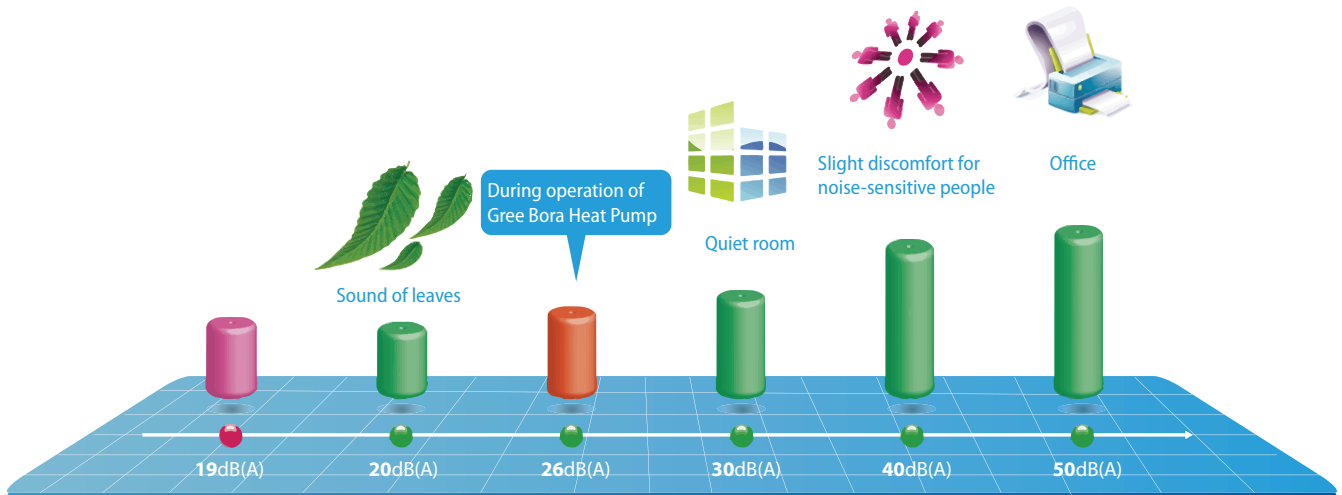
Intelligent Defrosting

Intelligent defrosting is designed to minimise the defrost time and reduce the number of defrost cycles; therefore, reducing energy waste.



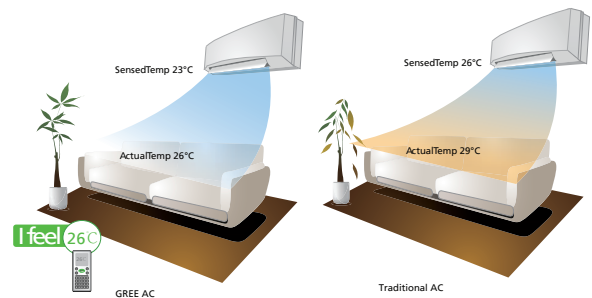
Quietly Smart

The new Bora range of heat pumps incorporates noise reducing technology. Coupled with 7 fan modes you get perfect airflow with quiet operation.



iFeel

All Gree Bora heat pumps feature “iFeel” functionality in your hand held remote control. By pressing the “iFeel” button on the remote control the temperature to control the unit is recorded from a sensor in the remote control rather than at the indoor unit on the wall. “iFeel” gives intelligent temperature control where it is needed and provides a more comfortable environment.



3D Airflow

Gree Bora provides a greater spread of air with Auto 3D Air Flow. To provide directed comfort, the air direction can be set left or right and up or down.

Turbo Cooling

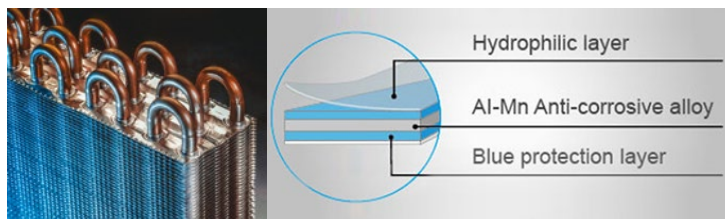
Provides maximum airflow and performance for 30 minutes to rapidly cool a room.

Smart Installer Features

- Anti-corrosive coating on all printed circuit boards to help protect the electronics
- Dry connection for gate card or remote on/off operation, great for schools and hotels
- Blue fin coils for corrosion protection
- Mono / multi compatible
- Intelligent Auto Reset, with power off memory function



Gate Card



Blue Fin Hydrophilic Coil



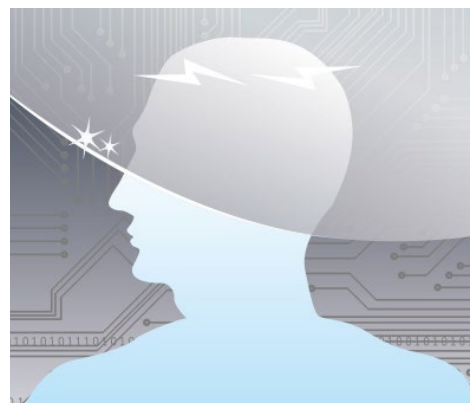
Without intelligent auto restart

When electric appliances all start up right after power is resumed, they will impact the national grid and affect the safety of power supply.



With intelligent auto restart

Electric appliances start up at different times after power is resumed; therefore, impact to the national grid is decreased.



Power Off Memory

Features



Auto Clean



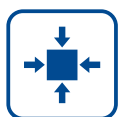
Automatic Operation



LED Display



Intelligent Defrosting



Compact Design



Clock Display



Cold Air Prevention



Comfortable Sleep Mode



Timer



Turbo Button



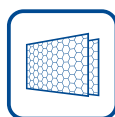
Self-diagnosis



Auto Restart



Lock



Healthy Filters



Factory WiFi



GREE+ APP



Gree Bora-X R32 Inverter Hi-wall Developer Series

Smart Life

- i-Feel remote control
- i-Choose LED display
- Wi-Fi Control

Smart Comfort

- Smart Health
- Quietly Smart
- Intelligent Defrosting

Reliably Smart

- Eco Design
- Soft Start Compressor
- Low voltage start up
- Wide temperature range (-15 ~50°C)
- Intelligent Auto restart

Smart Installer features

- Anti-corrosive coating on all printed circuits boards to help protect the electronics
- Dry connection for gate card or remote on/off operation, great for hotels and motels
- Blue fin coils for corrosion protection.
- Painted Al-ZN alloy coated steel sheet for added corrosion protection
- Refrigerant leakage protection

Model		GWH09AACXB-K6DNA1B/I	GWH12AACXB-K6DNA1A/I	GWH18AADXE-K6DNA1A/I	GWH24AAEXF-K6DNA1B/I
		GWH09AACXB-K6DNA1B/O	GWH12AACXB-K6DNA1A/O	GWH18AADXE-K6DNA1A/O	GWH24AAEXF-K6DNA1B/O
Part Number		AC7292-I/O	AC7293-I/O	AC7295-I/O	AC7297-I/O
Performance					
Cooling Capacity (range)	kW	2.55 (0.5~3.3)	3.52 (0.5~4.3)	5.2 (1.0~6.4)	7.1 (1.25~8.7)
Heating Capacity (range)	kW	3.0 (0.5~3.7)	3.8 (1.0~4.7)	5.6 (1.4~6.5)	7.1 (1.9~9.2)
Cooling power input (range)	kW	0.61 (0.1~1.1)	0.92 (0.2~1.5)	1.35 (0.22~2.1)	1.92 (0.4~3.0)
Heating power input (range)	kW	0.71 (0.14~1.2)	0.95 (0.2~1.8)	1.4 (0.21~3.0)	1.87 (0.36~3.2)
Cooling AEER	W/W	4.10	3.84	3.85	3.70
Heating ACOP	W/W	4.23	4.00	4.00	3.80
SERL Star Label	Cool	5.0/4.0/4.5	4.0/3.5/4.0	4.0/3.5/3.5	3.5/3.5/3.0
Hot Ave Cold	Heat	3.5/2.5/2.0	3.0/2.5/2.0	3.0/2.5/2.0	3.0/2.5/2.0
Dehumidifying Volume	L/Hr	0.8	1.4	1.8	2.4
Air Flow Volumes (Sh/SL)	L/sec	175/108	189/97	264/144	333/181
Sound Pressure (min/max) Ind	dB(A)	21/40	24/43	24/48	32/49
Sound Power (min/max) Ind	dB(A)	31/51	39/58	34/58	47/64
Sound Pressure / Power Out	dB(A)	51/61	52/61	58/68	59/69
Electrical					
Power Supply (Outdoor)	V/Hz/Ph	220 ~ 240/50Hz/1Ph			
Recommended Circuit Breaker	A	10		15	20
Nominal Current (cool/heat)	A	2.7/3.15	4.3/4.5	6.5/6.5	8.8/8.6
Control Wiring		3 Core plus Earth (4 Cores)			
Dimensions and Weights					
Dimensions (WxHxD)	mm	849x2289x215		970x300x225	1080x325x245
Net Weight	kg	10		14	16.5
Dimensions (WxHxD)	mm	732x555x330		873x555x376	958x660x402
Net Weight	kg	24	26.5	37	42.5
Installation					
Operating Temp Range Cool	°C	-10 ~ 50			
Operating Temp Range Heat	°C	-15 ~ 24			
Refrigerant Charge R32	kg	0.5	0.75	1.0	1.3
Max Pipe Length (pre-charged)	M	15 (10)	20 (10)	25(10)	
Max Height	M	10			
Additional Refrigerant	g/m	16		12	40
Pipe Connection	m	6.35 / 9.52		6.35 / 12.7	6.35 / 15.88



Cold Air Prevention



Timer



Turbo Button



Self-Diagnosis



Auto Restart



8°C Heating



Auto Clean



LED Display



Energy Saving



Dehumidifying



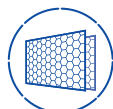
Golden Fin



-15°C Cooling



I Feel



Healthy Filters



R32 Refrigerant



Wifi Control



Comfortable Sleep Curves



Intelligent Auto Restart



Intelligent Defrosting



Wired Controller

Features:



Standard



Optional

Gree continues to work to improve their air conditioners, to that effect the specification are subject to change without notice. All Gree air conditioners sold in New Zealand are registered for MEPS and comply with AS/NZS 3823, including the 2019 GEMS determination. Furthermore all Gree air conditioners comply with AS/NZS 60335-2-40 electrical safety and carry the RCM mark under AS/NZS 4417. A Suppliers Declaration of Conformity (SDoC) is available on request.